

Customer :

customer

Customer part :

customer part

Comment :

Comment

S1=4.58

S2=3.77

Tmax=458

Tp S2=497.0

PI=0.55

HI=91

Sample =1732.80

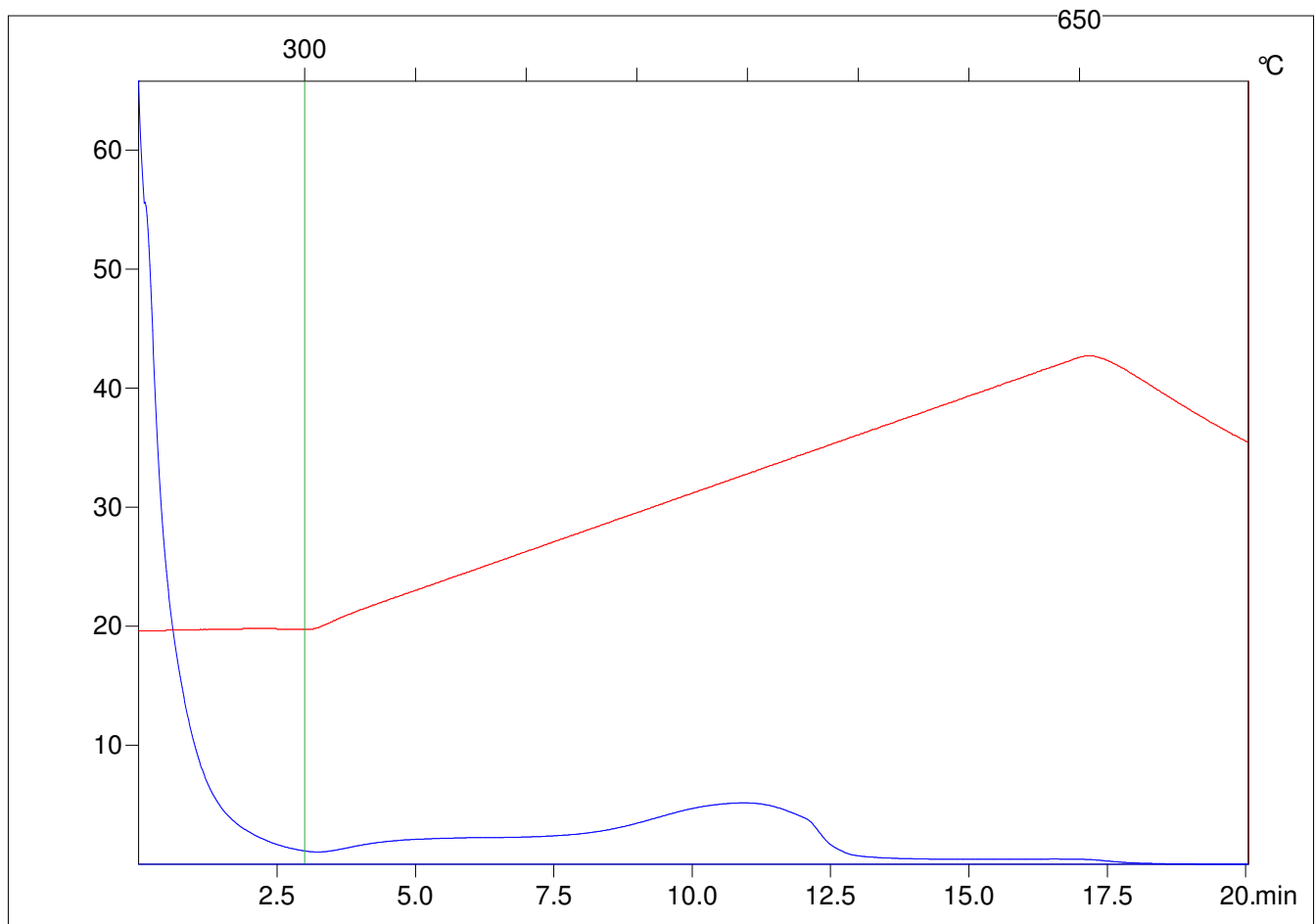
Method =Bulk Rock

Cycle=Basic

KFID(10\*9)=1444

Qty =70.4

TOC=4.14



C:\VINC\PK2\_1792\PK056.R00 : FID pyrolysis graphic

State

Pyro Status

Oxi Status